

EVR } Evolve Series®

The Practical Solution for Hardness and Unwanted Minerals

Evolve Series® EVR water conditioners are ideal for reducing levels of hardness and unwanted minerals. Yet, the EVR does more than just soften water ... it's also a self-chlorinating unit that delivers and maintains a high level of water quality.

Configured with high-performance resin media and an integrated chlorine generator, the EVR passes a precise level of free chlorine through the media bed with each regeneration. While the amount of chlorine is harmless to the media, it is very effective in killing the nuisance bacteria that produce unwanted tastes and odors.

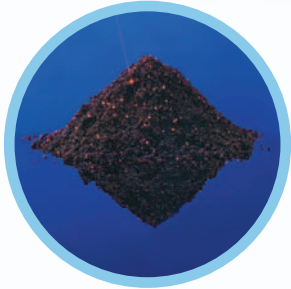
The EVR conditioners also feature the *IQ Controller™*, Water-Right's newest and most advanced microprocessor-based valve system. This revolutionary controller allows your EVR system to be fine-tuned to your specific water treatment needs. It also serves as the system gatekeeper that minimizes water and salt consumption.

The result is crystal clear ... superior performance and efficiencies, with the best water quality possible for you and your household.



Evolve®
Series

EVR } Evolve Series®

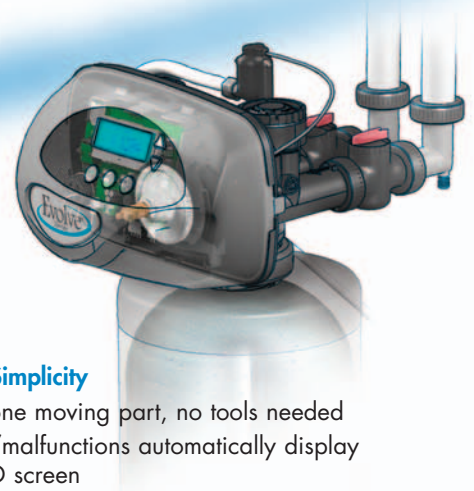


EVR High Capacity Resin

The Evolve Series® EVR units use only the finest resin media available. This high capacity resin powerfully eliminates problem-causing hardness elements from municipal and well water supplies.

The Evolve Series IQ Controller™ valve system is revolutionary in design.

With advanced microprocessor-based intelligence, it's like having a water treatment technician right inside the unit.



Large LCD Screen

- Communicates system status at a glance
- Easy-to-use programming interface
- Displays dealer name and phone number when service is needed
- Displays water usage and system history

"Low/No Salt" Alarms

- Visual/audible alarms alert when no salt is present
- Helps ensure media bed is sanitized and water is optimized for quality

Battery Backup

- System history remains safe, even during a power outage
- Maintains time of day — 10-year shelf life

1" Fully-Ported Valve Design

- High flow rates help sustain household water pressure, even with multiple users

Service Simplicity

- Only one moving part, no tools needed
- Issues/malfunctons automatically display on LCD screen

Water and Salt Saving Smarts

- Predicts daily water needs based on past usage, so you won't run short of treated water
- Water usage is metered and "remembered" — eliminates unnecessary regenerations that consume salt and water
- Vacation mode — easy to set, saves salt and water
- Self-adjusts for over-capacity usage

Versatile Cycle Sequencing

- Microprocessor-based control — the smart way to customize system performance to properly treat all water challenges

MODEL		EVR-844	EVR-1044	EVR-1054	EVR-1354
¹ Capacity: (Grains/Lbs. NaCl)	Maximum	25,600 @ 9.0	32,000 @ 15.0	48,800 @ 21.0	72,800 @ 24.0
	Medium	21,600 @ 6.0	28,400 @ 9.0	44,400 @ 15.0	64,200 @ 18.0
	Minimum	15,600 @ 3.0	23,600 @ 6.0	35,400 @ 9.0	53,000 @ 12.0
Amount of Media (Cu. Ft.)		0.85	1.0	1.5	2.5
Maximum Water Hardness (GPG)		50	75	100	100
² Maximum Iron (PPM)		1.0	1.0	1.0	1.0
³ Minimum pH Required		7.0	7.0	7.0	7.0
⁴ Total pH Adjusted Water at Continuous Flows		NA	NA	NA	NA
⁵ Peak Flow Rate (GPM @ P.PSI)		11.8 @ 15.0	17.1 @ 15.0	15.2 @ 15.0	20.3 @ 15.0
Continuous Flow Rate (GPM @ P.PSI)		5.0 @ 5.3	5.0 @ 2.8	5.0 @ 4.0	5.0 @ 2.6
Water Pressure Range (PSI) 25-100		25-100	25-100	25-100	25-100
Water Temp. (°F)		33-100	33-100	33-100	33-100
Electrical Requirements (volts-hertz)		110-50/60	110-50/60	110-50/60	110-50/60
Pipe Size		1"	1"	1"	1"
Total Dimensions:	Media Tank	8"W x 52"H	10"W x 52"H	10"W x 62"H	13"W x 62"H
	Brine Tank	18"W x 33"H	18"W x 33"H	18"W x 33"H	18"W x 40"H

¹ All Evolve water conditioners are factory preset at medium salting. Note: influent waters must be at least 3 GPG hardness and 80 TDS. A calcite or corosex unit may be needed for correct operation.

² Iron removal may vary depending on form of iron, pH and other local conditions. On waters that are pre-chlorinated, or where other pre-oxidation occurs, an iron precipitate can form that is too small to be filtered.

³ The pH listed is the minimum for the influent water.

⁴ This is the minimum number of gallons at the continuous flow rate corrected to a 7 pH. The actual amount of pH adjusted water may be greater.

⁵ Unit not tested for capacity at these peak flow rates. Water quality may vary.

Your local authorized Evolve dealer:



1900 Prospect Court • Appleton, WI 54914
920.739.9401 • 800.777.1426 • Fax: 920.739.9406